



**WELCOME TO GRENOBLE ALPES  
A LEADER IN INNOVATION & INDUSTRY**



# GRENOBLE ALPES AT A GLANCE

**815,000**  
INHABITANTS



**20** MILLION CONSUMERS  
within a 200 km radius

2022  
EUROPEAN  
GREEN  
CAPITAL



**2<sup>nd</sup>** LARGEST  
ENGLISH-SPEAKING  
population in France

**+ 60,000**  
STUDENTS



**+ than 30**  
organizations dedicated  
to help entrepreneurs



**+ than 750**  
INNOVATIVE START-UPS  
launched since 2000

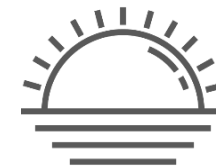


Easy access to  
**Lyon & Geneva**  
INTERNATIONAL  
AIRPORTS

**30%** of waste recycled  
**87%** valorized



**#2** French research  
hub in France



**2,100** hours  
of sun each year



# INTERNATIONAL LEADERS WITHIN A 20KM RADIUS

LYON 

CHARTREUSE 


GENEVA 



Companies represented by logos in the cluster:

- RioTinto Alcan
- THALES
- ROSSIGNOL
- CHARTREUSE
- FRESENIUS
- PDMA
- intel
- LYNRED
- Radiall
- VICAT
- Air Liquide
- Schneider Electric
- BIOMÉRIEUX
- HUAWEI
- EDF
- Roche
- J&J
- salesforce
- Qualcomm
- SIEMENS
- ARaymond
- engie
- G
- Capgemini
- NAVER LABS Europe
- DASSAULT SYSTEMES
- Apple
- GE
- CATERPILLAR
- Medtronic
- Hewlett Packard Enterprise
- CGI
- AVERY DENNISON
- AREVA
- BD
- framatom
- Atos
- ARKEMA
- orange
- APPLIED MATERIALS
- ST
- ALSTOM
- TDK
- PETZL
- soitec

VERCORS 

BELLEDONNE 



# GRENOBLE ALPES UNIQUE INNOVATION ECOSYSTEM

**#2 FRENCH RESEARCH HUB**



**1 of France's top 3**  
WORLD-CLASS CENTERS OF  
EXCELLENCE IN **AI**



**#1 SCIENTIFIC CITY**  
in France (outside Paris)

**#75 WORLDWIDE**  
-Nature index 2020

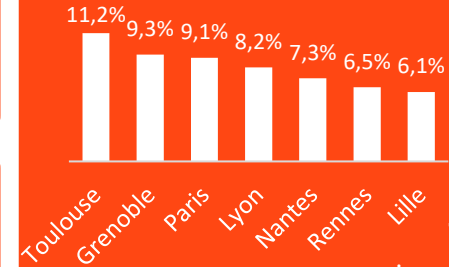
**#1 MOST INNOVATIVE PUBLIC RESEARCH INSTITUTE** in the world  
(Clarivate 2024)



**#1 European university** in innovation  
by number of patents filed (OEB 2024)



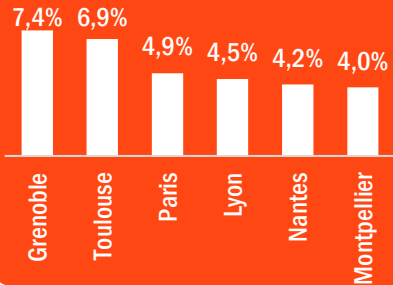
**13 DOCTORAL SCHOOLS**  
in France for **PhD** candidates



**#2**

in France  
for engineers  
engineers as a % of total jobs

**8.2 PATENTS** per  
10,000 inhabitants



**#1 in R&D**  
in France

R&D staff as a  
% of total jobs

**30,000** public &  
private jobs  
in **R&D**

**5 major european research facilities**

ESRF



synchrotron  
research  
center

ILL



neutron  
research  
center

IRA



radio  
astronomy  
institute

EMB



molecular  
biology  
lab

EMF



magnetic  
field  
lab

Major  
**competitive clusters**



# GRENOBLE ALPES A MAJOR HUB FOR INDUSTRY



# OUR STARTUPS & SCALEUPS RAISED OVER €1.9B IN 3 YEARS

**+750**

Startups created  
(SINCE 2000)

**+ €3,9B**

Raised by local  
startups

**40%**

Come from academic  
research

**44%**

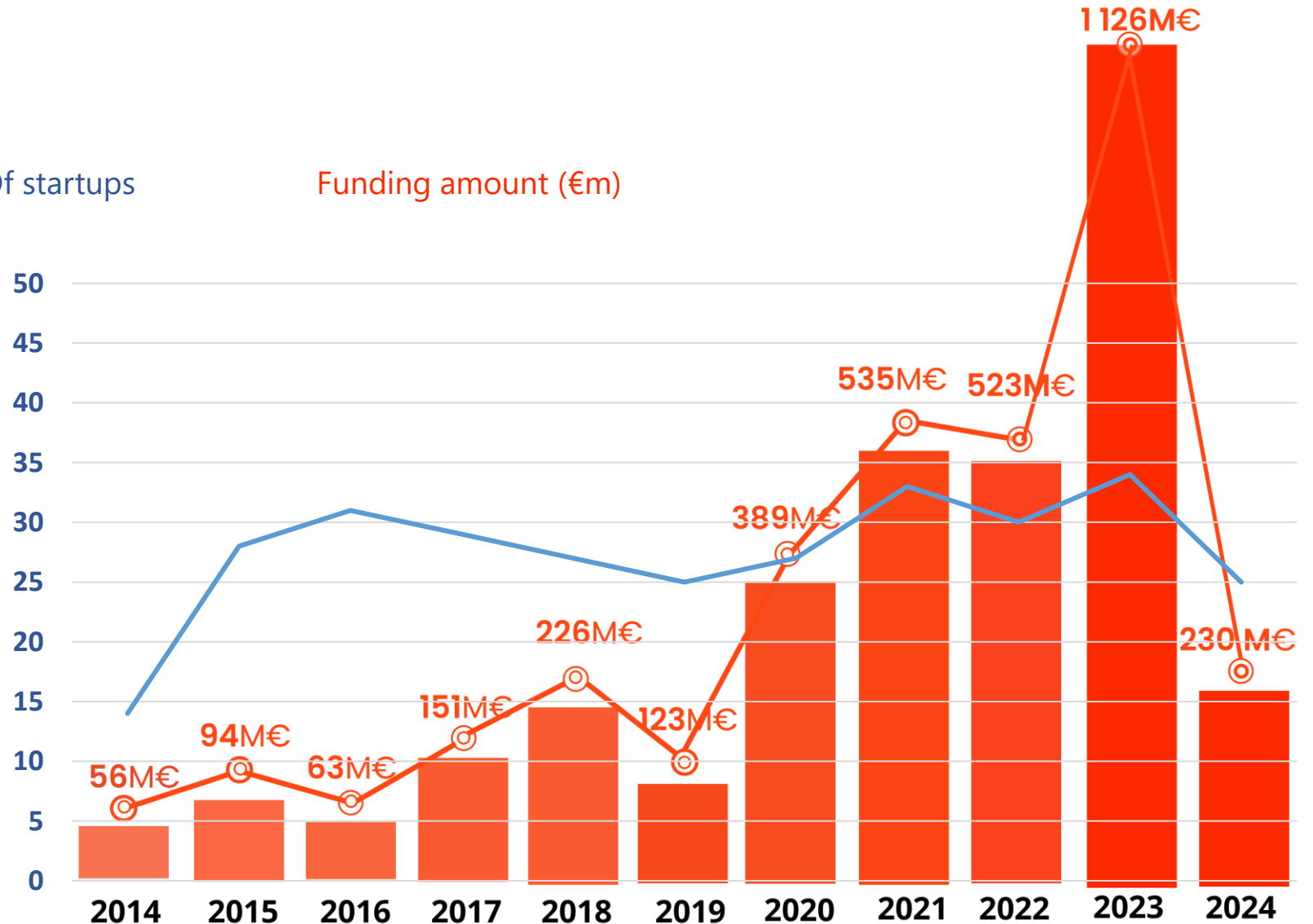
Work in deeptech

**85%**

Are B2B

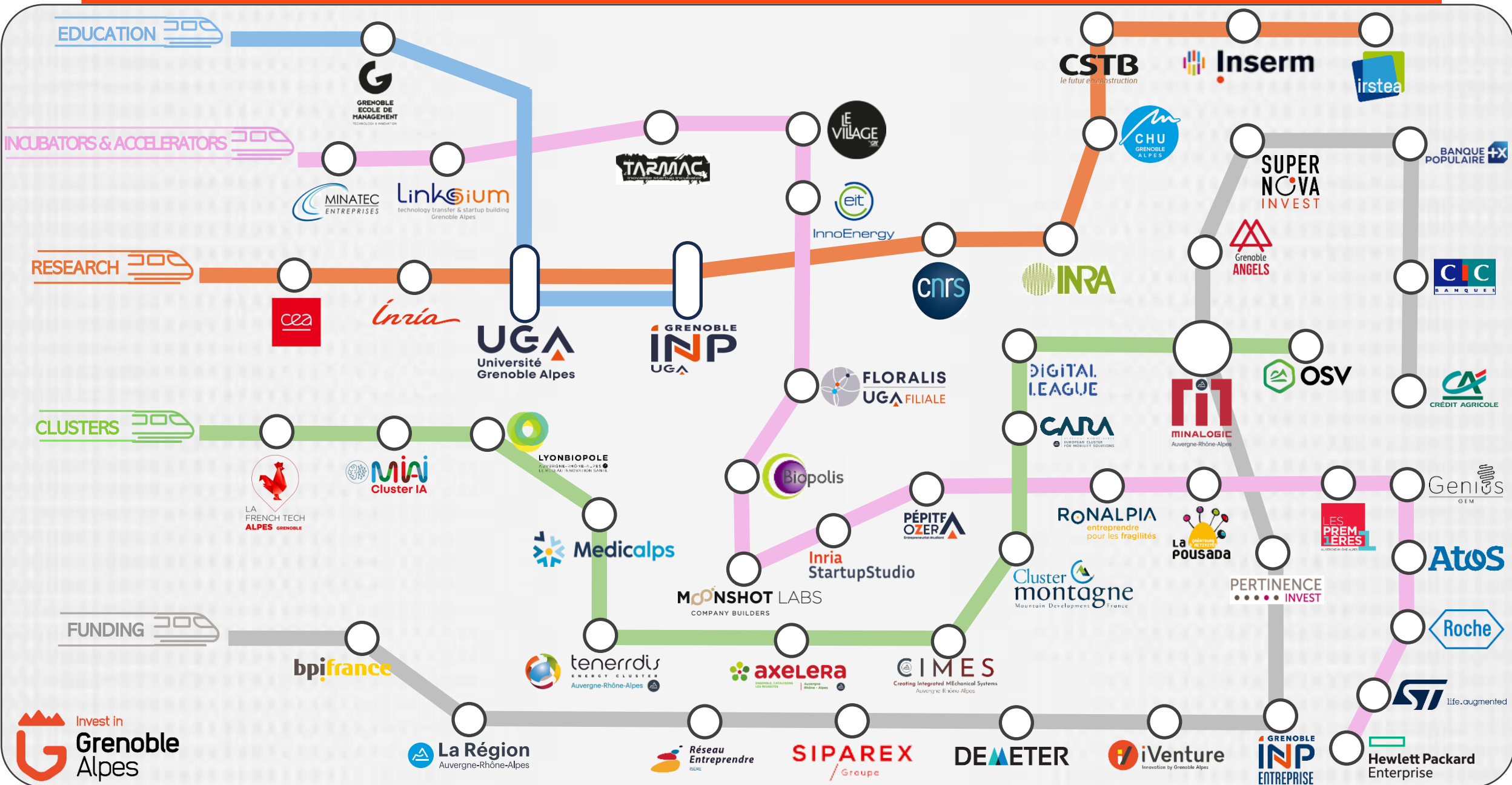
# Of startups

Funding amount (€m)





# GRENOBLE ALPES INNOVATION ECOSYSTEM



# OUR OFFER



**Semiconductor**

**AI and digital**

**Energy & Sustainable Tech**

**Healthtech**

**Sport & Outdoor**





## YOUR CONTACT :



**Alexandrine ROMESTANT**

Economic Project Manager

 +33(0) 7 88 38 00 63

 [alexandrine@investingrenoblealpes.com](mailto:alexandrine@investingrenoblealpes.com)